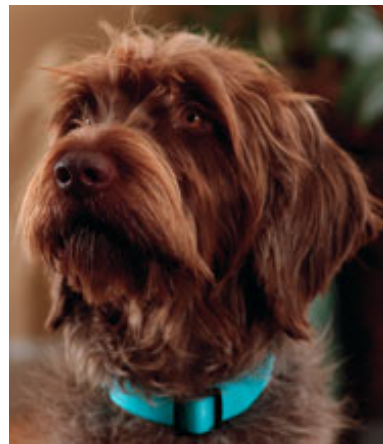


## Wirehaired Pointing Griffon

*Drs. Foster & Smith Educational Staff*

The Wirehaired Pointing Griffon is an intelligent and easily trained breed that is very eager to please. They love to be around people and have a friendly temperament. Although initially developed in Holland, the majority of the breed's development occurred in France.

The Wirehaired Pointing Griffon is an excellent swimmer and water retriever who's particularly adapted for swampy/marshy country because of its harsh, wiry coat. Described as very loyal and trustworthy, this breed is also an excellent family dog as well as a meticulous hunting companion.



### Interesting Breed Facts:

- Popularity:** 105th in 2007; with 430 registered with the American Kennel Club (AKC).
- First recognized as a breed:** Eduard Karel Korthals wrote the breed profile in 1887. The first Wirehaired Pointing Griffon was brought to America in 1887. The current AKC standard was approved on October 8, 1991.
- AKC Grouping:** Sporting.
- Size:** Height at the shoulder: approximately 22"-24" for males, 20"-22" for females. Weight: males: 50-70 lbs., females: 35-50 lbs.
- Appearance:** The Wirehaired Pointing Griffon is a sturdy, medium-sized dog with a square-shaped head and muzzle. The abundant mustache and eyebrows give a friendly expression. Eye color ranges from yellow to brown. The ears lie flat to the head and the nose is always brown. The tail is docked by 1/3-1/2. The outer coat is one of the most distinguishable traits of the breed. It is medium-length, straight, and wiry, and the undercoat is lighter in color and fine. This breed requires a regular amount of grooming. AKC-acceptable colors are steel gray with brown markings, chestnut brown, roan, white and brown, white, and orange.



<b>#1 preventable health problem:</b>	Hip dysplasia is a concern, so be sure you get your pup from a responsible breeder.
<b>Preferences:</b>	Very eager to please, the Wirehaired Pointing Griffon is energetic and enjoys being with people. This breed particularly enjoys activities such as swimming or hunting in the field. Retrieving toys and interactive toys provide quality bonding time and keep his active mind occupied.
<b>Best features:</b>	The Wirehaired Pointing Griffon is loyal, very versatile, and known for both pointing and retrieving.
<b>Biggest challenge to owners:</b>	Many Wirehaired Pointing Griffon owners find this breed's energy level to be quite high. In order to maintain proper health and prevent destructive behavior, the Wirehaired Pointing Griffon requires several daily periods of brisk exercise.